

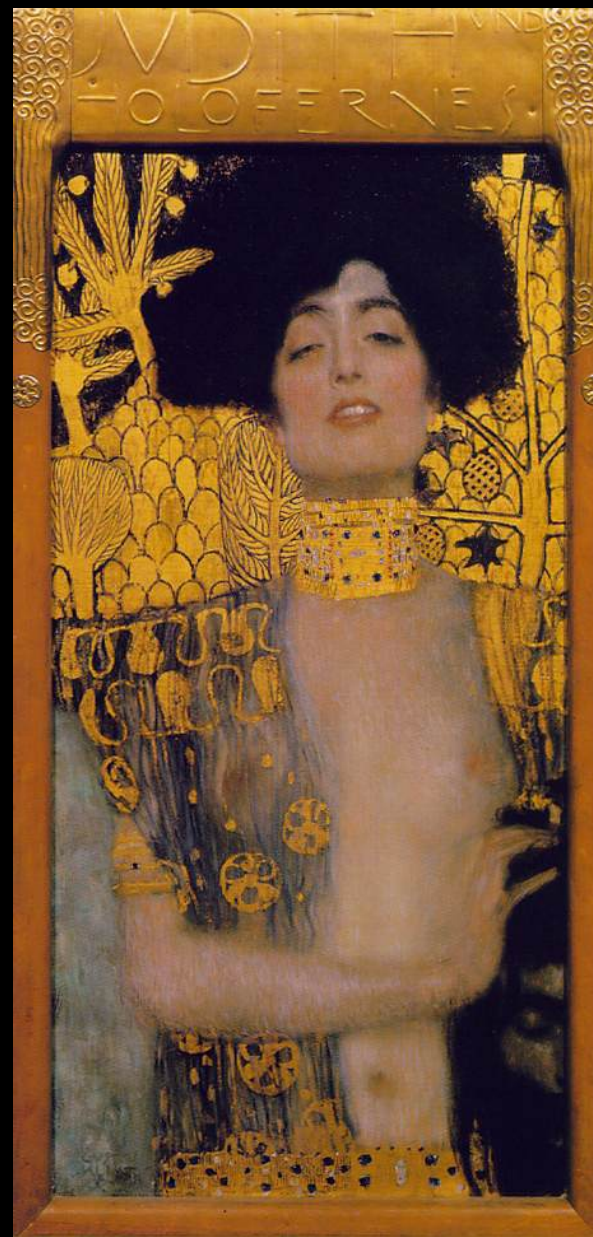
*Judith I*, 1901

Óleo sobre tela, 84x42 cm

Österreichische Galerie, Viena.

GUSTAV KLIMT

(1862, Baumgarten– 1918, Viena)



*Giuditta con la sua ancella.*

(1613/14)

Óleo sobre tela

Palazzo Pitti, Florença.

The painting 'Giuditta con la sua ancella' by Caravaggio depicts two women in profile against a dark background. On the left, Judith is shown from the chest up, wearing a white blouse with a low neckline and a dark, patterned garment. She holds a sword in her right hand, looking towards the right. On the right, her maidservant is shown from the waist up, wearing a white headscarf and a yellowish-brown dress. She is holding a basket containing a severed head, which she is presenting to Judith. The lighting is dramatic, highlighting the figures against the dark background.

**Andrea Mantegna (1431-1506)**

*Giuditta con la testa di Oloferne , 1495 ca*

National Gallery of Art,  
Widener Collection,  
Washington



**Giorgione (1477-1510)**

*Giuditta*, 1504 ca.

Óleo sobre tela,  
transferido para painel,  
144 x 66,5cm

Hermitage Museum, St.  
Petersburg



**Caravaggio (1571-1610)**

*Giuditta decapita Oloferne,*  
1598,  
Óleo sobre tela, 145 x  
195cm  
Palazzo Barberini, Roma.



**Artemisia Gentileschi (1593-1653)**

Giuditta decapita Oloferne,  
1614/20

Óleo sobre tela, 199x162 cm  
Galleria degli Uffizi, Florença.



**Tintoretto (1518-  
1594)**

*Giuditta e Oloferne,*  
1579 ca.

98.82 x 74.02 inch  
Museo del Prado,  
Madrid.



**Tintoretto (1518-1594)**

*Giuditta e Oloferne*,  
Óleo sobre tela, 58x119cm  
Museu do Prado, Madrid





**Veronese (1528-1588)**

*Giuditta con la testa di  
Oloferne*, 1580 ca.,  
Óleo sobre tela, 195x176cm  
Palazzo Rosso, Genova



**Botticelli (1445-1510)**

*Il ritorno di Giuditta a  
Betulla, 1472 ca.*

Galleria Degli Uffizi,  
Firenze.



**Michelangelo (1475-1564)**

*Giuditta con la testa di  
Oloferne*, 1508-1512  
affresco,  
Cappella Sistina, Roma.

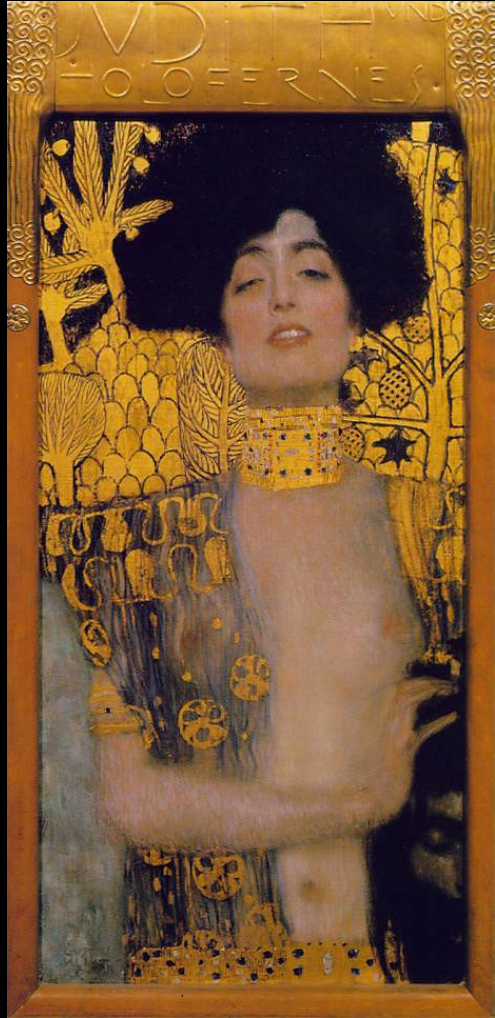


**Donatello (1386-1466)**

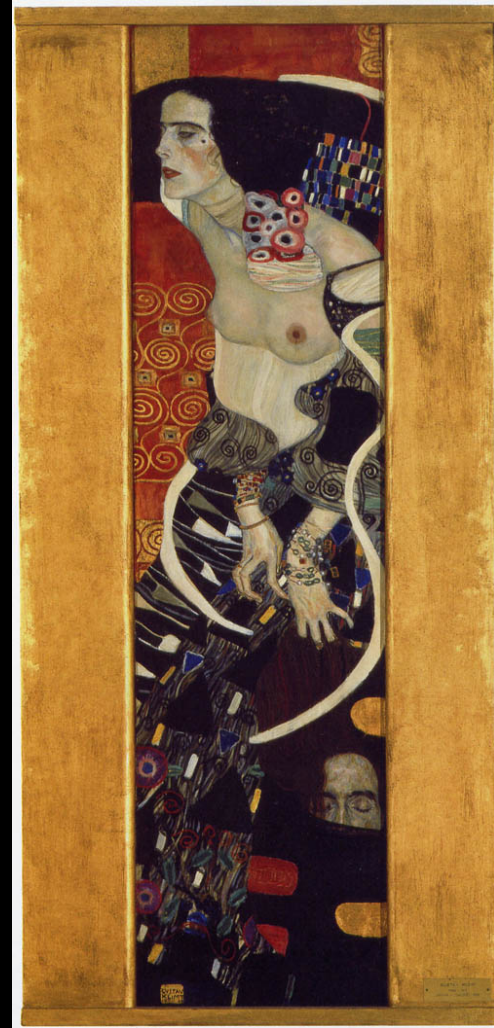
*Giuditta e Oloferne*, 1455-  
1460,  
bronze,  
Palazzo Vecchio, Firenze



Judith I, 1901

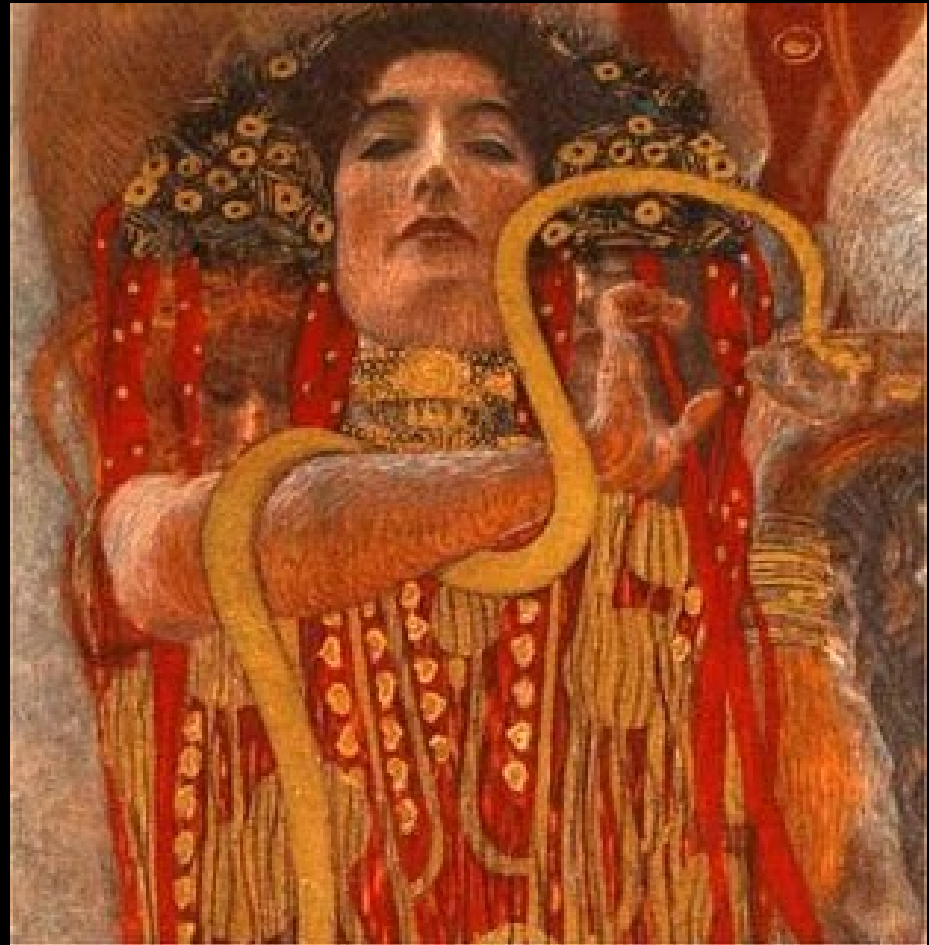


Judith II, 1909



Higia (pormenor de A  
Medicina), 1900/07

Gustav Klimt



*Peixes Dourados*  
(pormenor), 1901/02

Gustav Klimt



O Friso de Beethoven  
(pormenor) , 1902.

Gustav Klimt





*O Amor*, 1895  
Óleo sobre tela, 60x44cm  
Historisches Museum,  
Viena



*O Amor* (pormenor), 1895.



*Mulher na lareira*, 1897-98  
Österreichische Galerie,  
Viena



**Pierre-Auguste Renoir  
(1841-1919)**

*Mulher com véu.*



*Renoir*

*Mulher com sombrinha, 1867*



*Gustav Klimt*

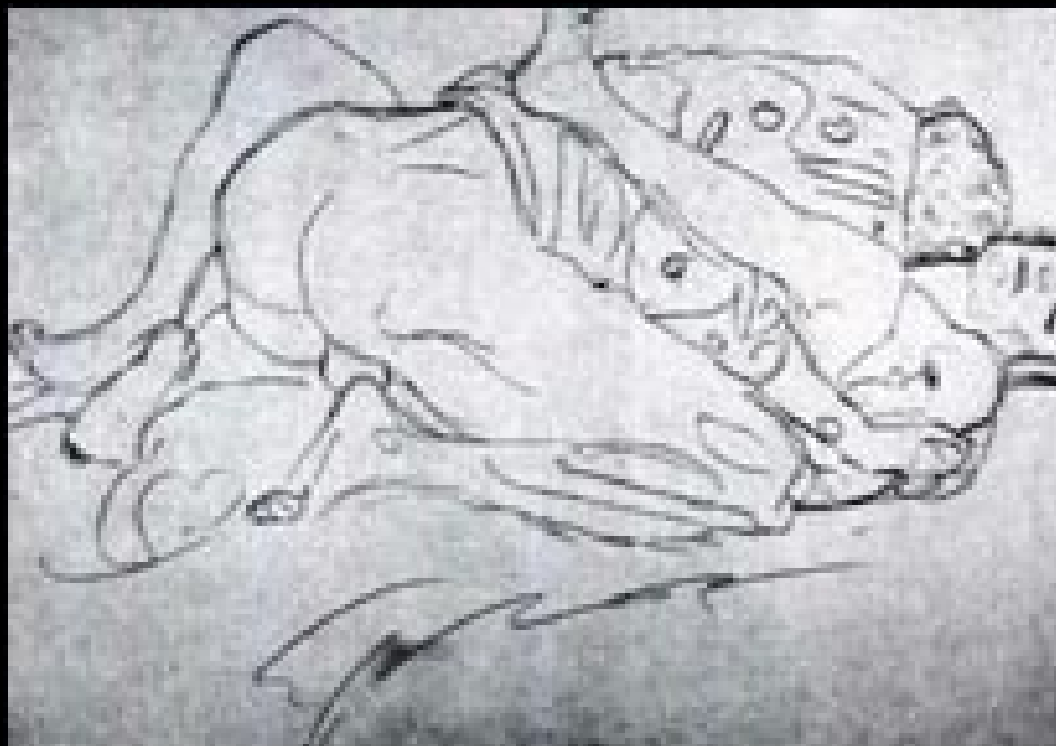
*Retrato de Marie Hennenberg, 1901/02*



*Mulher sentada com as coxas abertas*, 1916-17.  
Lápis, lápis vermelho, realçado a branco, 57x38cm  
Áustria, coleção particular.



*Casal de Amantes, virados para a direita, 1914.*



Macieira I, 1912 ca.  
Óleo sobre tela,  
110x110cm  
Österreichische Galerie,  
Viena.





*Retrato de Emilie Flöge,*  
1902  
Óleo sobre tela, 181x84cm  
Österreichisches Museum,  
Viena.



*A Virgem*, 1913  
Óleo sobre tela,  
190x200cm  
Galeria Národní, Praga.



*As Amigas* (pormenor) ,  
1916/17  
Óleo sobre tela, 99x99cm  
Queimado no Castelo  
Immendorf em 1945.



## Bibliografia:

Fiedl, Gottfried. *Gustav Klimt. 1862-1918. O mundo de Aparência Feminina*. (Tradução: Casa das Línguas, Lda). Germany: Benedikt Taschen Verlag GmbH, 1992.